

SANI
WITH AN EYE





SONI WITHANEYE HAS EMERGED WITH A GENRE EXPANDING COLLECTION OF MUSIC THAT ATTRACTS LISTENERS FROM HOUSE LOVERS TO HEAD BANGERS.

HER LATEST RELEASE, "YOUR GONNA MISS MY LOVE" REMIX WAS ADDED TO DEFECTED RADIO'S PLAYLIST AND ELECTRIFIES THE DANCE FLOOR. HER DEBUT ALBUM, "REBEL" FEATURED MOBB DEEP AND QUEST LOVE OF THE ROOTS TO NAME A FEW.

BORN AND RAISED IN QUEENS, NYC, SONI WITHANEYE HONED HER SKILLS IN CHURCH WHILE SINGING IN THE CHOIR. AS A CHILD SHE BEGAN PLAYING THE PIANO AND GUITAR, WHICH PROVED SHE HAD AN INNATE TALENT TO SING AND PERFORM. WHEN SHE BEGAN SPINNING RECORDS AND ADDED PRODUCING TO HER REPERTOIRE, SHE EXPANDED HER TALENTS OF HOW TO WORK A CROWD.

AS A NYC NATIVE AND WORLD TRAVELER, SONI WITHANEYE CONTINUOUSLY FINDS INSPIRATION IN A DIVERSE RANGE OF SOUNDS AND CULTURES WHICH ARE REFLECTED IN HER UNIQUE MUSIC. WHILE HER PUERTO RICAN ROOTS HAVE BEEN SHOWCASED IN SOME OF HER PAST CATALOG OF MUSIC, IT IS HER PRESENT WORK THAT SPEAKS TO HER MUSICIANSHIP ACROSS A MYRIAD OF GENRES. SONI WITHANEYE CREDITS AN ARRAY OF ARTISTS FOR HER ECLECTIC LOVE OF MUSIC; FROM DAVID BOWIE TO DOLLY PARTON, MADONNA TO DINAH WASHINGTON AND RAY BARRETO TO LED ZEPPELIN.

"I WOULD LOVE FOR MY MUSIC TO CREATE EMOTION, JOY, CONSCIOUSNESS, COMPASSION AND INFLUENCE PEOPLE," SONI SAYS, "THERE ARE MANY DIFFERENT EMOTIONS AND A STRONG PERSONALITY I PROJECT THROUGH MY MUSIC, THAT'S INFLUENCED BY MY EXPERIENCES, FRIENDS AND FAMILY, AS WELL AS THE DIFFERENT GENRES I'VE BEEN EXPOSED TO GROWING UP."

INSPIRED BY HER FATHER, WHO PLAYED EVERYTHING FROM THE CONGAS TO SAXOPHONE AND MANAGED THE BROOKLYN BREAKERS, SONI WITHANEYE MOVES IN THE SAME DIRECTION, NOT BEING ABLE TO BE PIGEONHOLED INTO ONE SPECIFIC GENRE. SONI HAS WORKED WITH TODD TERRY, LOUIE VEGA, LEGENDARY PRODUCER/ DJ JELLYBEAN BENITEZ, AS WELL AS SUPER PRODUCER TIMBALAND, BUBBA SPARXXX, THE BEATNUTS AND TONY TOUCH. SONI WAS THE FACE OF CYPRESS HILLS' BREAL.TV WHERE SHE HOSTED A LIVE WEEKLY BROADCAST "TOCA TUESDAY," WHERE SHE INTERVIEWED ARTISTS AND PARTY GOERS, SHOWCASING HER CUNNING ON-CAMERA CHARM.

SONI HAS RECENTLY BECOME A SOUGHT AFTER MUSIC PRODUCER FOR BRAND COMMERCIALS, CAMPAIGNS AND RECORDING ARTISTS. SHE IS THE VOICE OF A REOCCURRING CHARACTER FOR THE COMEDIC USS NEW YORK CARTOON. SHE HAS HELPED CATAPULT FELLOW ARTIST'S BRANDS AND CREATED HER OWN: LOVEBREAK, DREAMLAND AND HAUS OF CREATIVES RECORDS WHICH ALL CELEBRATE A LOVE FOR CULTURE IN MUSIC WHILE PROVIDING A PLATFORM OF OPPORTUNITIES FOR OTHER ARTISTS TO BE DISCOVERED AND HEARD.

WHILE SOME MAY TRY TO THROW LABELS ON WHAT HER WORK REPRESENTS, SONI SERVES AS A MUSICAL TEACHER OF SORTS, DEFINING WHAT SHE TRULY IS: A VERSATILE, EVOLVING AND TRANSFORMING FORCE WITH A VOICE AND ENERGY THAT TOUCHES THE SOUL.



PERFORMANCE HIGHLIGHTS

TRIBECA FILM FESTIVAL

BLUE NOTE

WEBSTER HALL

PARADISE CLUB

LEBAIN NYC

LITTLE ISLAND

CHINA WHITE - LONDON UK

HOUSE OF BLUES

EL MUSEO

SUMMERSTAGE CENTRAL PARK

FORMULA 1 - MONTREAL CA

PRIMAVERA SOUND FESTIVAL - BARCELONA, SPAIN

PACHA - IBIZA, SPAIN

PEPSI FESTIVAL - BUENOS AIRES, ARGENTINA

OUTPUT

WAKANDA MUSIC FESTIVAL

MADISON SQUARE GARDEN

SOB'S

EDEN GALLERY

BAYFRONT PARK AMPHITHEATER

CLUB HARLEM - TOKYO JP

NEASY - NAPLES IT



DJ APPEARANCES WITH

D-NICE

DJ JAZZY JEFF

NATASHA DIGGS

DJ SPINNA

LA INDIA

TALIB KWELI

JELLY BEAN BENITEZ

CYPRESS HILL

LIZZO

LOUIE VEGA

JUST BLAZE

NINA SKY

BLACK COFFEE

STRETCH ARMSTRONG

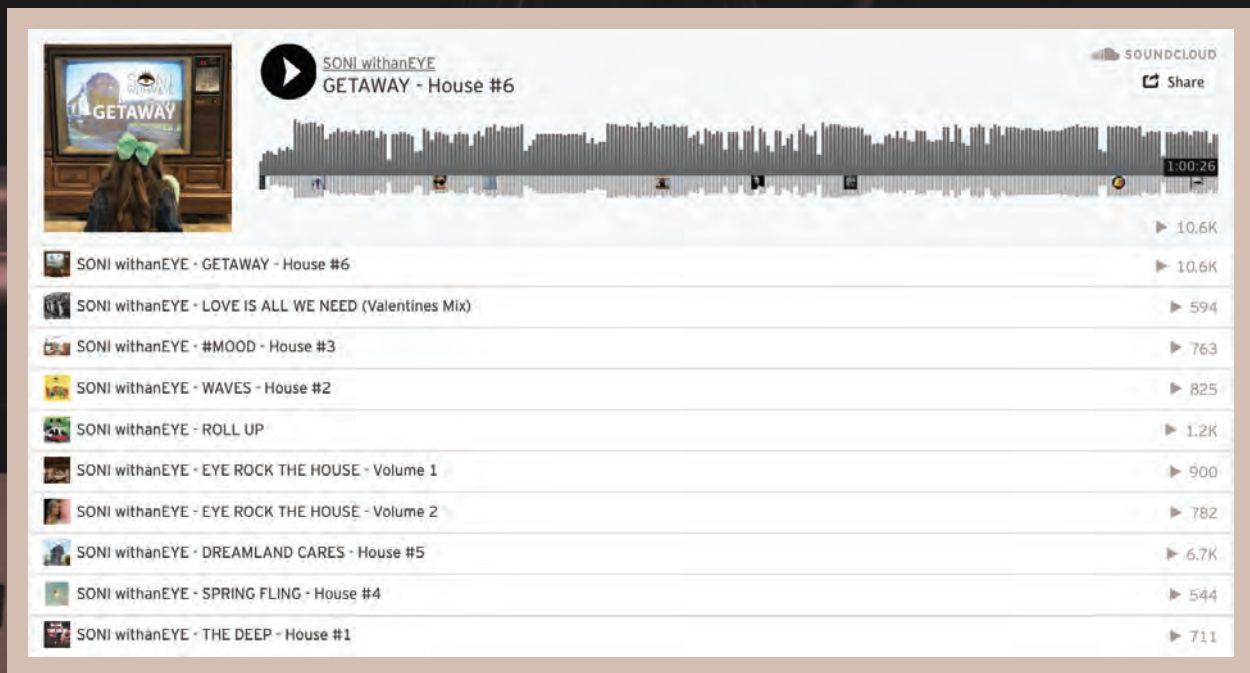
TROYBOI

TONY TOUCH



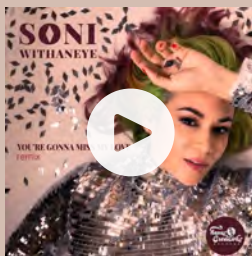
DJ MIXES | MUSIC RELEASES

PRESS PLAY TO BE REDIRECTED

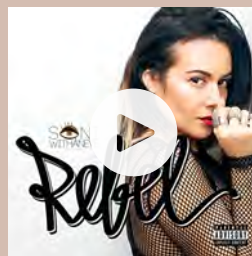


A screenshot of a SoundCloud playlist titled "SONI withanEYE". The top track is "GETAWAY - House #6" with a play button icon and a waveform. Below it is a list of other tracks with their respective play counts. The tracks are:

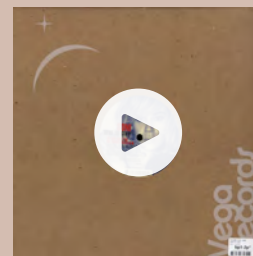
Track Name	Play Count
SONI withanEYE - GETAWAY - House #6	10.6K
SONI withanEYE - LOVE IS ALL WE NEED (Valentines Mix)	594
SONI withanEYE - #MOOD - House #3	763
SONI withanEYE - WAVES - House #2	825
SONI withanEYE - ROLL UP	1.2K
SONI withanEYE - EYE ROCK THE HOUSE - Volume 1	900
SONI withanEYE - EYE ROCK THE HOUSE - Volume 2	782
SONI withanEYE - DREAMLAND CARES - House #5	6.7K
SONI withanEYE - SPRING FLING - House #4	544
SONI withanEYE - THE DEEP - House #1	711



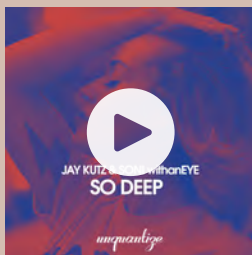
"YOU'RE GONNA MISS MY LOVE"
SALIVA CONDOS REMIX



DEBUT ALBUM
REBEL



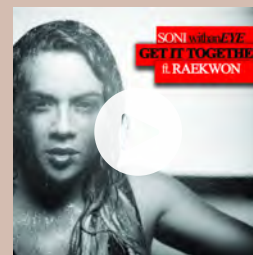
"HERE TO STAY"
PASTABOYS REMIXES



"SO DEEP"
JAY CUTZ & SONY



"REBEL" REMIX
POLYRYTHM



"GET IT TOGETHER"
FT. RAEKWON

BRAND PARTNERSHIPS



Google



Nestlé



Kiehl's
SINCE 1851

★macy's



VICELAND

TUMI



verizon✓

purple®





BOOKING INQUIRES: SONIWITHANEYE@GMAIL.COM

CORPORATE & PRIVATE BOOKINGS: KARRIE@KAGEKONSULTING.COM

